

BOOMERANG CYCLOTRAC

Updating Firmware Over USB



[Step 1 - Gather required equipment](#)

[Step 2 - Get the firmware file](#)

[Step 3 - Locate the firmware file on your computer](#)

[Step 4 - Prepare your Cyclotrac for update via USB](#)

[Step 5 - Connect Cyclotrac to the computer via USB](#)

[Step 6 - Perform the firmware update](#)

Step 1 - Gather required equipment

To follow these instructions you will need

- Boomerang Cyclotrac device
- Paper clip
- Micro USB cable
- Windows or Mac Computer with USB port and internet access

To access video tutorials on how to update firmware over USB, please see below:

1) [Windows Instructions Video](#)

2) [Macbook Instructions Video](#)

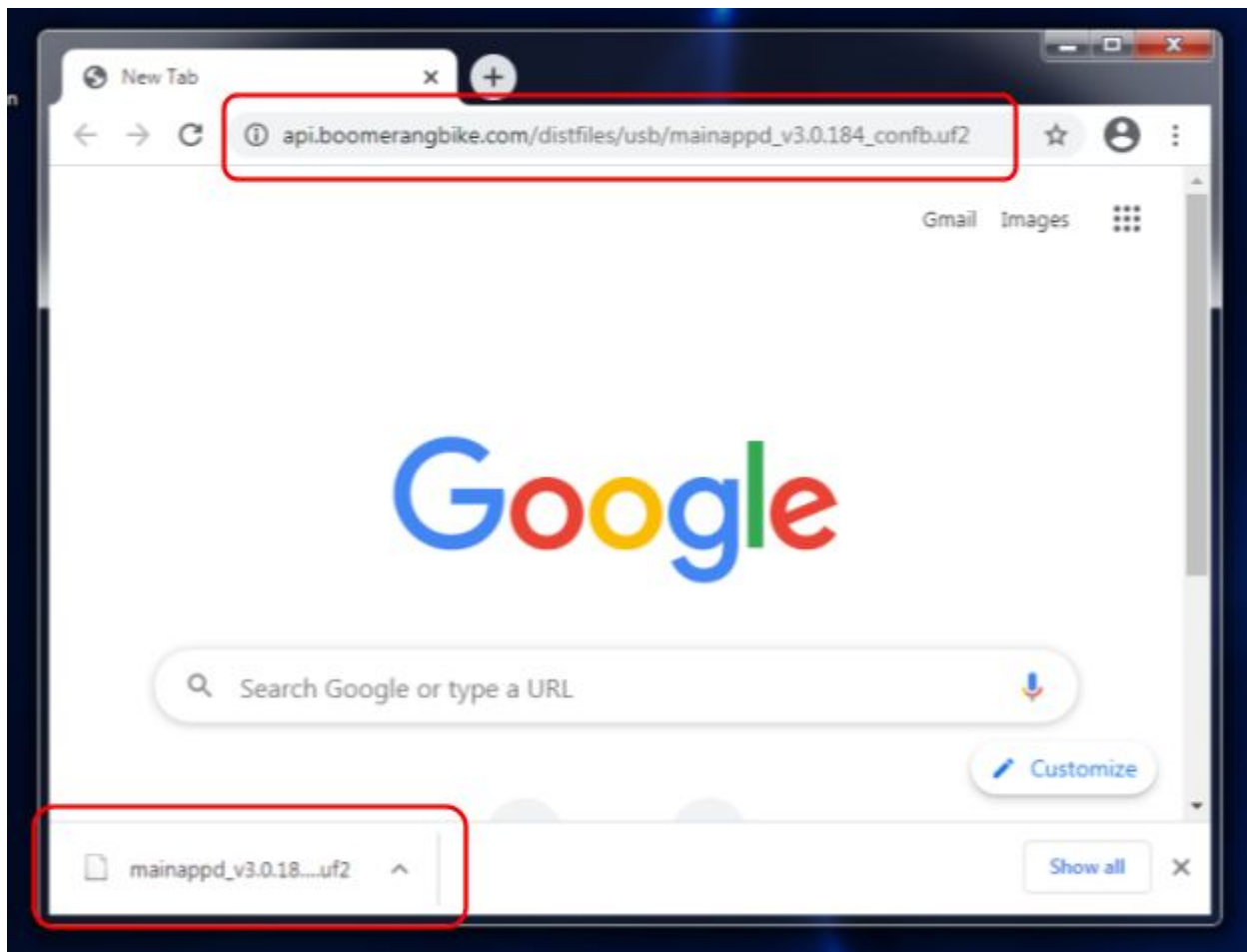
Step 2 - Get the firmware file

If BoomerangBike customer service has provided you a different file to use, use that file and go directly to step 3.

[Download Firmware 193](#)

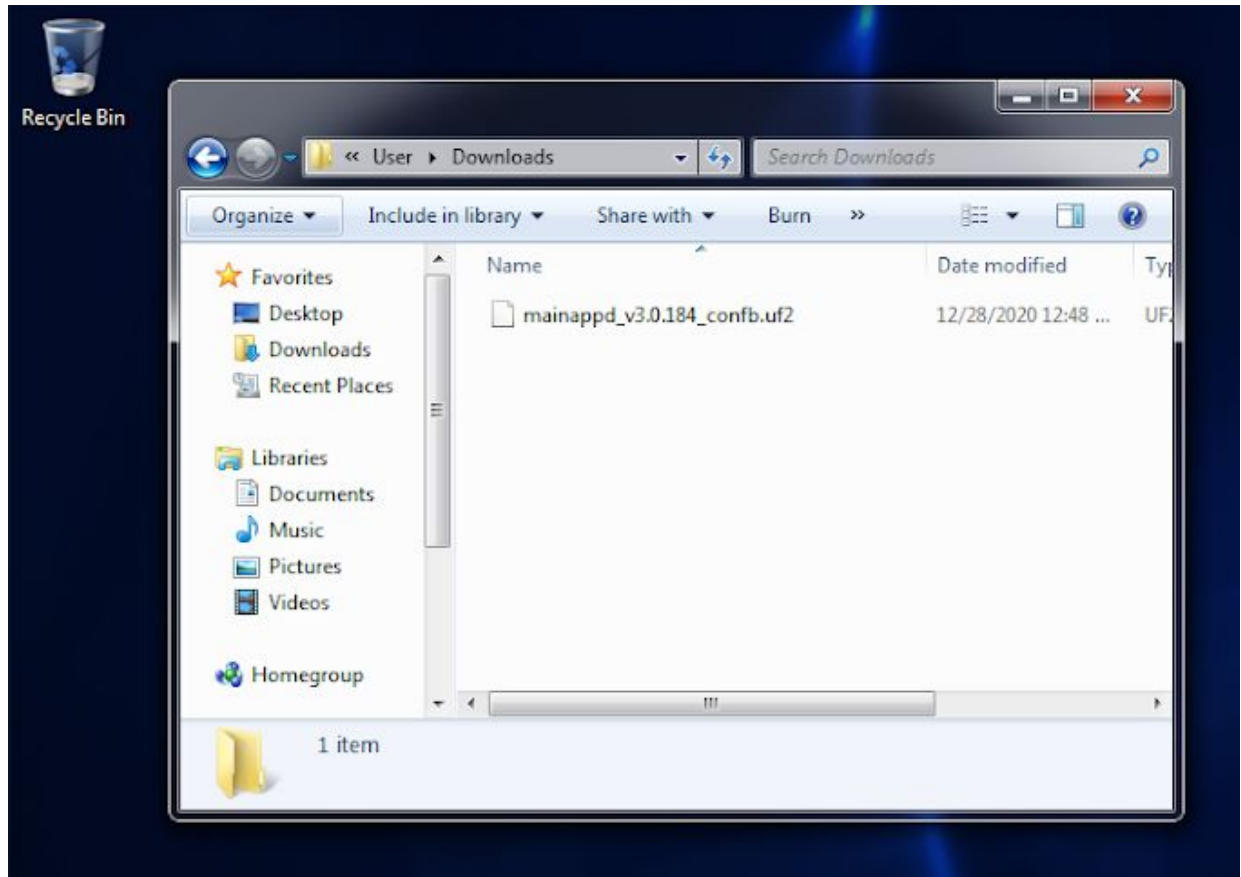
On your computer, use a web browser to follow this link and download Cyclotrac firmware.

This will begin a short firmware file download.



Step 3 - Locate the firmware file on your computer

Use a File Explorer (Windows) or Finder (Mac) to locate the file on your computer. On Windows and Mac machines, most web downloads will go into your Downloads folder.



Step 4 - Prepare your Cyclotrac for update via USB

Locate the RESET button hole on the Cyclotrac device



Using an unfolded paperclip, gently press the RESET button twice within 1 second (double-click the button).



Confirm that the Cyclotrac is ready for USB upgrade by observing the green light near the gear icon. The green light should smoothly fade on/off. No other lights should be on.



Green light will slowly fade on-off.

All other lights off.

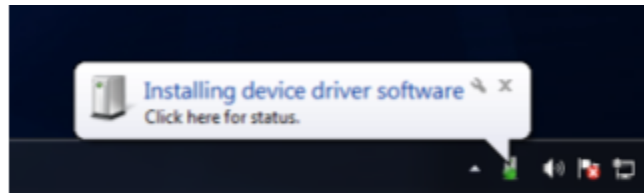
Step 5 - Connect Cyclotrac to the computer via USB

Connect the Cyclotrac to your computer using the micro-usb cable.

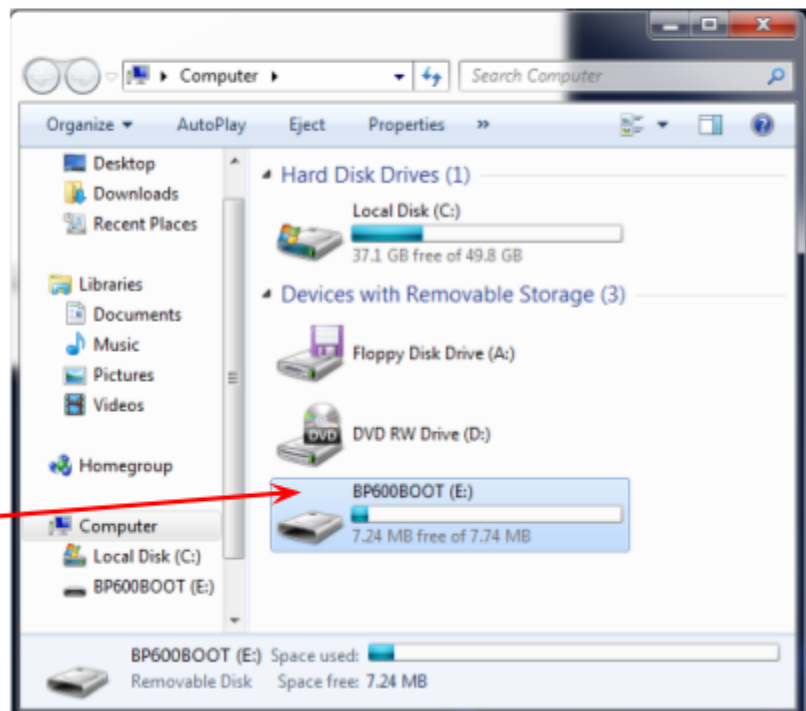


Cyclotrac will be detected as a USB disk with the name "BP600BOOT". Your operating system may automatically install drivers to support the USB disk. This may take up to ~2 minutes.

Installing drivers...



BP600BOOT
disk detected.



Step 6 - Perform the firmware update

Drag-and-drop the firmware file onto the BP600BOOT disk.

The firmware update will be performed immediately -- it takes ~3 seconds to complete. After the update, the BP600BOOT disk will disappear and your CycloTrac device will reboot and start running the new firmware. The CycloTrac may flash its lights and beep, this is normal and expected.

